

FROM THE EMMY NOMINATED EXECUTIVE PRODUCER OF  
THE HANDMAID'S TALE, SHADOWHUNTERS AND THE ORIGINALS

LIVE. LOVE. DIE. REPEAT.

# FALLEN

ADAPTED FROM THE #1 NEW YORK TIMES BESTSELLING NOVELS

Silver Reel



eccho rights



# FALLEN

Silver Reel



## OVER 11 MILLION COPIES SOLD WORLDWIDE

Beloved by millions of fans all over the world, Lauren Kate's **FALLEN** series is one of the most successful New Adult stories of this century, holding the number three spot on the New York Times Bestseller list.

The novels track Luce and Daniel's fated romance across worlds and timelines, and unravels the mystery of where they came from and why they might never be together.

Readers from around the globe have been enraptured by Kate's incredible world building and character arcs, now for the first time the novels will be adapted into a returning series to delight fans old and new. With material for multiple seasons and spinoffs and a talented cast under option for four seasons, **Fallen** promises to be the next big series franchise.



eccho rights



## FALLEN GLOBAL SALES FIGURES - BOOKS SOLD



US - over 4 million  
UK, Australia & NZ - over 2.5 million  
Italy - over 1 million  
Rest of Europe - over 1 million  
South America - over 2 million  
Asia - 500 K

Good Reads - 570k+ ratings and 21k+ reviews

“This epic romance is a perfect blend of mystery, intrigue, and celestial imagery with a beautiful, bittersweet ending.”

—SLJ

“Twilight-style success could be in the cards for the fallen-angel saga.”

—The Bookseller



# FALLEN

Silver Reel



FALLEN is a new grounded fantasy series about Luce, a young woman whose actions will prove vital to the balance of good and evil. Luce has lived multiple lives and is destined each time to die as soon as she falls in love.

LIVE. LOVE. DIE. REPEAT.

Luce has no idea of the power she wields, nor of who she is. Luce is the Angel of Love, fallen from the heavens and now facing her last life. And there are forces who wish to force her to turn away from love and control the crucial choice she must make.

eccho rights



# FALLEN

## WHERE WE BEGIN

Tormented by visions of terrifying “Shadows” since she was a child, Luce is suddenly arrested for a crime she knows she didn’t commit and taken to a forbidding and suspiciously well defended institution, Sword and Cross. There she finds herself under the watchful eye of the Elders – an unsettling combination of psychiatrists, guards and a librarian. Nothing adds up.

Luce is immediately drawn to Daniel – a strangely familiar young man she is convinced she has met before. She also meets the mischievous and dangerous Cam, and when they stumble on Daniel escaping the facility in Episode 1, the two decide to follow. Hot on Daniel’s heels and walking ever closer to the edge to a cliff edge Cam suddenly slips and grabs at Luce to stop him falling. Looking a horrified Luce dead in the eye he hints that there is a much bigger reason she is there before letting go and plunging to his death.

Hearing Luce’s cries, Daniel ditches his escape plan and runs to help a distraught Luce. All three are bundled up by armed guards who appear from nowhere. Cam hasn’t made it. Howson throws Luce and Daniel into solitary confinement, but on the way into her cell she passes Cam who gives her a wink – he is alive and apparently unhurt...

Who are they and what are they all doing there?





# FALLEN

Silver Reel



## SEASON 1

On an idyllic day out with the other residents at a lake that sits safely within The Veil, the protective field around the institution, Luce is attacked by something in the water. None of the adults will give Luce a straight answer about what she saw and in a further horrifying twist she realizes that Dr. Howson has tried to erase her memory of the incident. But his clumsy procedure has failed.

The institution is sent into lockdown. As the Elders scramble to protect Luce without explaining why, it's clear that Luce and Daniel have only scratched the surface of the forces at play.

Luce is far more important than she or Daniel could ever have imagined. As their feelings for each other grow, together they discover a horrible truth

about the doctor in charge and his medical experiments. Working together to investigate, Luce, Daniel and her new friends discover that they have all been there much longer than they realized: decades in some cases. They have all be subject to memory modification.

Determined to make use of the creature that attacked Luce, Dr Howson has transported it into the facility where it is able to communicate with Luce telepathically. It is a vicious and otherworldly creature – an Outcast – one of a vast horde that is also seeking Luce to try to control her decision as she reaches the end of what could be her last life.

eccho rights



# FALLEN



Silver Reel



The Veil will protect everyone only so far but as more and more outcasts begin to descend on Sword and Cross desperation will set in, and the veil will be compromised.

Howson's assurances that he could control it prove empty, and the creature gets loose within the facility. The horde of Outcasts, sensing that Luce is within their grasp, descends on Sword and Cross. Desperation sets in among the misguided Elders to force Luce to make the fateful choice – the warm hearted Miss Miriam turns on the rest, tries to murder Luce by setting fire to the library before dragging Luce to the Vellum: a sacred alter deep in the woods to try and force her hand.

As the moment of Luce's 21st birthday approaches, her feelings for Daniel are stronger than ever and Sword and Cross is swarmed by Outcasts as the residents, beginning to realise their enormous power and importance prepare for a mighty showdown, whilst Luce must face her most primal fear.



eccho rights



# FALLEN

Silver Reel



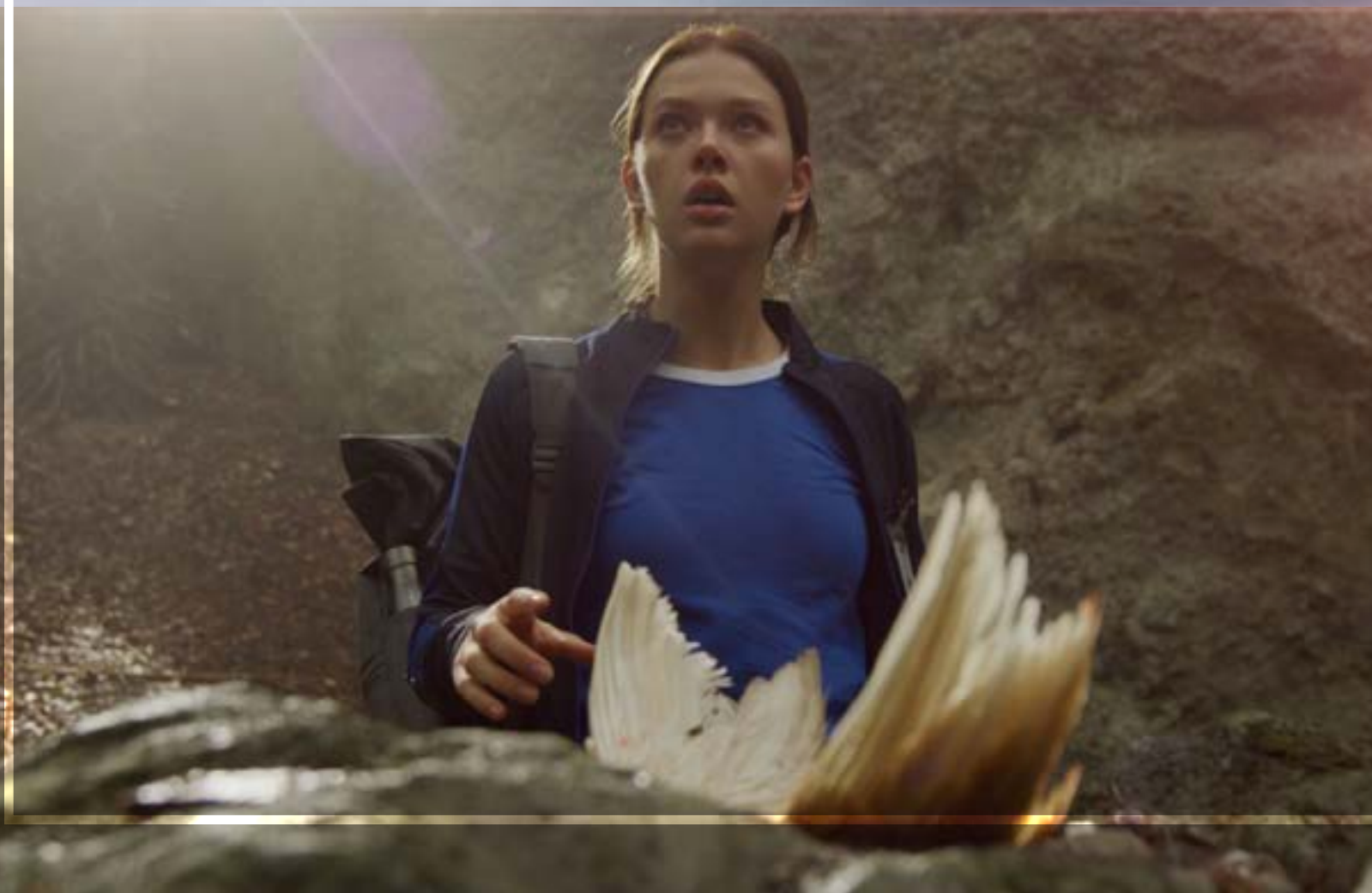
## WHERE WE GO

Luce and her fellow residents will come to realize that they are fallen angels, thousands of years old. Most important among them, Luce is the Angel of Love and Daniel the Guardian Angel.

Tortured by fragments of memories of time together, Luce and Daniel will begin to piece this together - not just from this lifetime, but from countless lifetimes before. As they delve deeper, they discover they are locked in an affair that's survived for millennia, condemned to be re-lived with the same tragic end. In each lifetime, the moment Luce falls in love with Daniel, she's consumed by a fire which burns her alive. But in this lifetime, Luce has a final chance to break free. The thing is — this time it's her last chance and as the day of decision approaches, those following the prophecy are determined to prevent them from falling in love.

As dark forces attempt to forge a world without love, and the misguided Elders wrestle to control Luce's choice on the impending judgment day, Luce and Daniel fight to break the curse that keeps them apart. If Luce is killed, the balance will finally be tipped; love will die, and hate will spread like a cancer across the Earth. The Elders are mortal; their ancient task passed down from generation to generation and like a game of telephone the details have gone awry, and their aims woefully misguided.

Poised on the edge of a final battle, the fate of every human being rests on Luce overcoming her fear of the Shadows that have haunted her since she was young. She must use what she has learned from her fellow inmates to discover her true identity in order to realize her power.



eccho rights



## THE WORLD

We spend Season 1 at Sword & Cross: Reform school, detention center, specialist psychiatric prison, whatever the inmates or staff may call it, it is a high security facility that is home to a group of young, determined people thrown together through their supposed transgressions.

Grand and forbidding but beautiful. at its head is Dr Howson, a psychiatrist claiming to have the residents' best interests at heart. Alongside him Miss Sophia and Miss Miriam provide discipline and care, respectively. At first it seems benign: the beautiful library, chapel and grounds with woodlands and a beautiful lake.

But Sword & Cross has a suspicious combination of religion, medical procedures military-grade defense and standards of discipline. The guards

aren't afraid to use force to keep the residents in line, but prayers are kept up with disturbing regularity. Surrounding the institution is an electric fence although this seems designed more to keep the residents in, rather than anything out and it is this that Daniel disarms for his ill-fated escape.

The institution is protected by a fragile forcefield called the Veil – but it's unclear what the Veil is defending them from. As Luce delves deeper she starts to find hidden depths to the place: a laboratory where experiments are performed, a network of dark tunnels down which later she will lead her new friends as they run for their lives...



## BACK STORY

In the beginning, there was only Heaven – ruled over by the Throne. The Throne surrounded itself with the most beautiful, powerful angels, while the lower-caste angels lived happily on the plains of Elysium. Everything was in harmony, until there was a war in heaven – which divided the Angels. On one side, the supporters of the Throne, on the other, the supporters of Lucifer – who claimed that the Throne wasn't entitled to rule. The 'senior' Angels were asked to pick a side, to fight in a holy war – which would decide who should rule in heaven. Once the Angels had chosen, the numbers were perfectly even – and only two Angels were left to choose. The Angels were Lucinda and Daniel. Lucinda refused to fight in a war about power, insisting the only thing worth fighting for is love.

In a fury, the Throne cast from heaven Luce and all the angels who followed her. Once on Earth, Luce is forced to live 1000 lifetimes on earth in mortal form and with no recollection of who she is. In each lifetime, she will meet Daniel some time before her 21st birthday and fall in love with him... but the moment she falls in love, she will die. As an immortal angel on earth, Daniel would have to watch the woman he loves die repeatedly until the 1000 lifetimes had passed, and Lucinda would be asked once again to pick a side.

On earth, Luce and the rest of the high caste angels who were banished from heaven are vulnerable: they don't know that they are angels and they have no special powers. There is a threat on earth: The Outcasts – lower caste angels who inhabited the lower plains of heaven, and when Luce fell to earth, so did they. Most of the Angels quickly scatter across the earth but as the Enlightenment approaches, the Outcasts form their own, misguided plan of how they will get back home: steal Lucinda and present her at the gates of Heaven, ready to do battle for the Throne.

With the angels roaming the earth, the Throne entrusted 24 Elders to be care-takers of the angels on earth, and to pave the way for the Day of Decision, when Luce would be asked once again to pick a side. As the Elders are mortal, their task has been passed from parent to child so by the time Luce has begun her 1000th life, the Elders are tired and broken; the curse is potent, and no attempt to prevent Luce and Daniel falling in love has ever worked. The Elders have exhausted themselves protecting the angels from the individuals, organizations and governments who have tried to entrap the angels for their own gain. Added to that, the Elders own attempts to coerce, control and entrap the Angels have backfired, resulting in conflict and deaths among themselves.



# FALLEN

Nervous about the outcome of Luce's choice, but wary of intervention, the Elders have established Sword & Cross to provide a protected, safe space where Luce can end her last life in a controlled environment. They have rounded up as many angels as possible, and now the clock is ticking to Luce's 21st birthday, by which time they expect her to have fallen in Love with Daniel, and died, upon which she will be asked again to make a choice between the Devil and the Throne.

They hope that Luce and Daniel have learned their lesson through their pain – and will pledge their allegiance to the Throne.

As the close of Season 1, Luce and the angels have discovered that they are immortal and a portal to another time has been opened. In Season 2, it's confirmed that they are angels and Luce is in a race to find all the other angels before The Outcasts find them. And in the later seasons, Luce discovers that she is the angel of love. Ultimately, she will confront Lucifer, and the Throne. She will relive the fall, and on the Day of Decision, she will fight for the right to choose who she loves.

Silver Reel



*"When this show first came across my desk I was immediately struck by the journey of the main character and saw tremendous potential in the trajectory of the series."*

— Matt Hastings, Showrunner

eccho rights





FALLEN

Silver Reel



“When this show first came across my desk I was immediately struck by the journey of the main character and saw tremendous potential in the trajectory of the series.

Luce is not a typical TV character and it was important to me to help build this series around her as a strong role model. As my two daughters grow up into young women, the influence of what we do is not lost on me. Not just for my own family, but what we’re sharing around the globe. I’ve been on the stages at Comic Con and have seen first hand how we can not just entertain but inspire.

So, it was important to me to make her grounded and vulnerable but not a victim. A modern character who finds her self worth and path through her various choices, surprising experiences and leadership rather than seeking validation via the attention of a hot guy.

Through this we were able to explore mental health and the struggles young people are experiencing all over the planet. To know that they aren’t alone was important to us too.

Like June in The Handmaid’s Tale, Luce is a young woman fighting against oppression in a desperate search for the truth. And in that truth there is value and we are rooting for her every step of the way.

Now this is all couched in a genre show, but the genre plays in the background. As a support system to help tell these stories in a meaningful yet entertaining way. To reach audiences of all ages.

I’m extremely proud of FALLEN. It’s hopeful, relevant and entertaining and clearly has the engine to continue for many seasons to come”.

Matt Hastings, Showrunner

eccho rights



# FALLEN

Silver Reel



## THE CHARACTERS

Luce and her fellow residents are fallen angels, thousands of years old. Most important among them, Luce is the Angel of Love and Daniel the Guardian Angel. Tortured by fragments of memories of time together Luce and Daniel begin to piece together their past - not just from this lifetime, but from countless lifetimes before. As they delve deeper, they discover they are locked in an affair that's survived for millennia, condemned to be relived with the same tragic end.

In each lifetime, the moment Luce falls in love with Daniel, she's consumed by a fire which burns her alive. But in this lifetime, Luce has a final chance to break free. The thing is — this time it's her last chance and as the day of decision approaches, those following the prophecy are determined to prevent them from falling in love.

eccho rights



# FALLEN

Silver Reel



## LUCE THE ANGEL OF LOVE

Before all hell broke loose, Lucinda Price lived a normal life. But on the evening of her graduation from college, something terrible happened. Luce has only splintered memories — fire, screaming... and the visions of Shadows that have haunted her since childhood. When she's accused of a crime so horrific that she can't bear to imagine it, Luce goes on the run. When she's finally caught, she's rejected by her family, and finds herself in Sword & Cross.

Throughout her many lives, Luce has been haunted by the Shadows; terrifying shadows appear to her that no-one else can see. She's seen them since she was a child and the most terrifying aspect of them is the Shadow People: figures who appear in the darkness. When they come, they have a physiological, psychological effect on Luce. They have always been a dark, malevolent force in her life, but at Sword and Cross, the Shadows become more intrusive and menacing.

Luce initially believes they are the cause of the fire that claimed the life of a friend. But whilst she's at Sword & Cross, Luce will experience 'lucid dreams' where she sees significant and dramatic situations from her last life – seeing these situations as an observer (for example the motorcycle crash with Daniel).

It's not until the end of Series 1 that Luce will work out that these wispy apparitions are not demons coming to take her, but impartial observers that offer a pathway into the past.

At the end of Season 1, Luce will have to face her fear of the Shadows – running into the dark to escape the swarming Outcasts. When she arrives in the past, she will see that the shadow people that have haunted her are nothing more than shadows of people from the past.

In later seasons, Luce will use the Shadows to travel back in time to find out more about her past with Daniel – bringing her face to face with the Fiend who was responsible for their curse and completing her voyage of self-discovery.

## TALENT – JESSICA ALEXANDER

The Little Mermaid (Film, 2023)

Into the Deep (Film, 2022)

A Banquet (Film, 2021)

Get Even (TV, 2020)

eccho rights



# FALLEN

Silver Reel



## DANIEL THE GUARDIAN ANGEL

Realizing there are malign forces at work at Sword & Cross, Daniel struggles to escape — but when he discovers why Luce, a perfect stranger, means so much to him, he knows he can't leave her behind. As he delves into his past with Luce, he'll discover he was created to defend the most vulnerable. A natural protector, Daniel is tempted to wade in at every sign of danger, but he can't fight Luce's battles for her; instead, he must empower her to fight her own.

## TALENT - GIJS BLOM

The Letter for the King (TV, 2020)

Nominated for a 2021 Daytime Emmy for his performance in this Netflix fantasy series

eccho rights



# FALLEN

Silver Reel



## CAM THE ANGEL OF CHANCE

Cam is freedom, without responsibility — but despite the good he could do, he prefers to use his luck for blackjack and other risky pursuits. Unpredictable and fun, Cam is a rival to Daniel in Luce's affections. In later seasons, we find out how Cam lost his heart, and why he needs to see the world burn.

## TALENT – TIMOTHY INNES

The Last Kingdom (TV, 2018–2022)

Harlots (TV, 2017)

eccho rights



FALLEN

## MS MIRIAM

TALENT – SARAH NILES

Ted Lasso (TV, 2021)

Viewpoint (TV, 2021)

I May Destroy You (TV, 2020)

Nominated for a 2022 Primetime Emmy for her performance in Ted Lasso

## DR HOWSON

TALENT – ALEXANDER SIDDIG

Shantaram (TV, 2022)

Peaky Blinders (TV, 2016)

Game of Thrones (TV, 2015–2016)

Star Trek: Deep Space 9 (TV, 1993–1999)

Silver Reel



## EDWARD

TALENT – JAMES CALLIS

Blood & Treasure (TV, 2019–2022)

Star Trek: Picard (TV, 2022)

12 Monkeys (TV, 2017–2018)

Battlestar Galactica (TV, 2004–2009)

eccho rights



# FALLEN

Silver Reel



CASSIE



**LAURA MAJID**

Eagles (TV, 2020-2021)

ROLAND



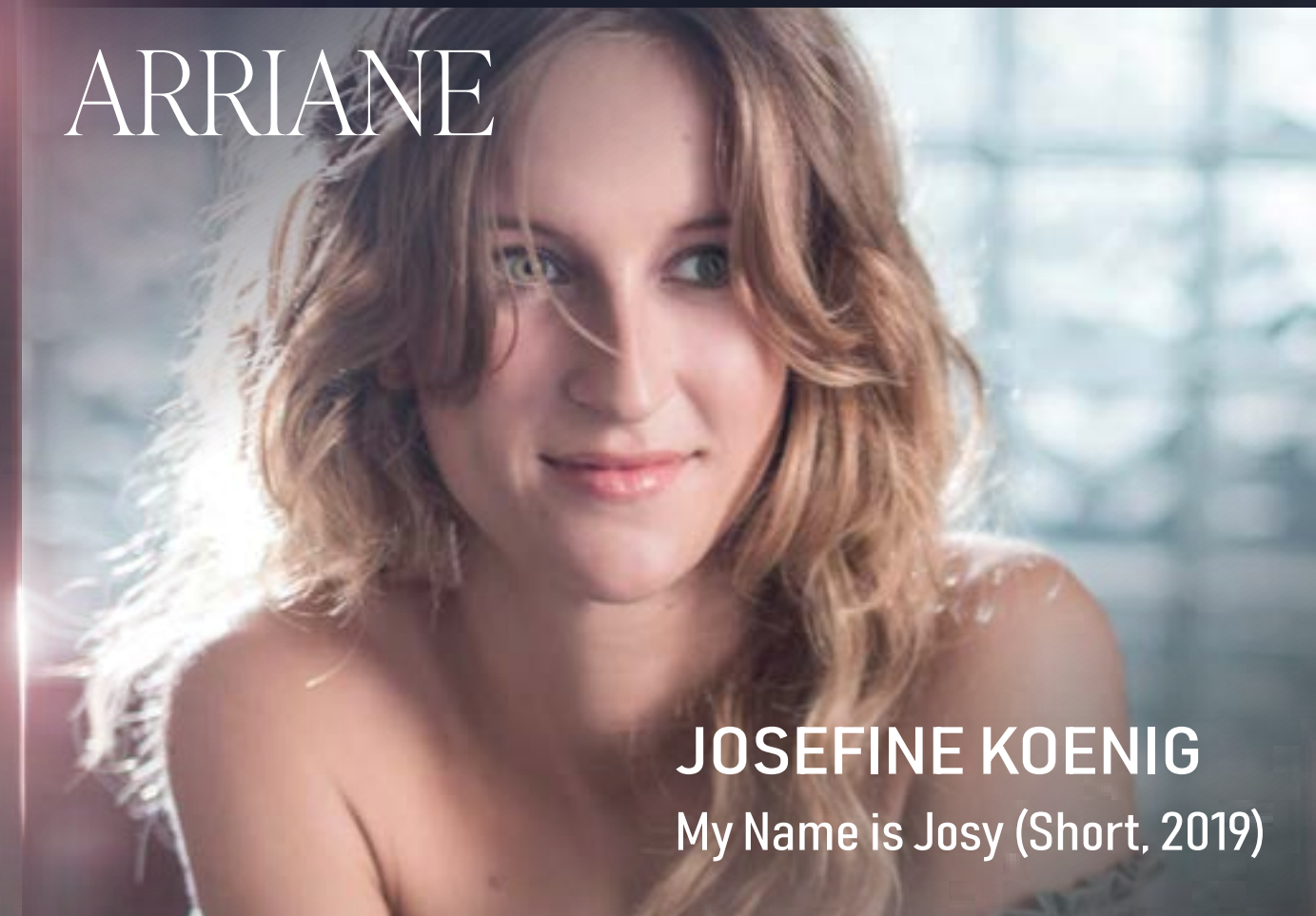
**LAWRENCE WALKER**

Screw (TV, 2022)

Find Me in Paris (TV, 2018-2020)

Our Girl (TV, 2013-2016)

ARRIANE



**JOSEFINE KOENIG**

My Name is Josy (Short, 2019)

GABE

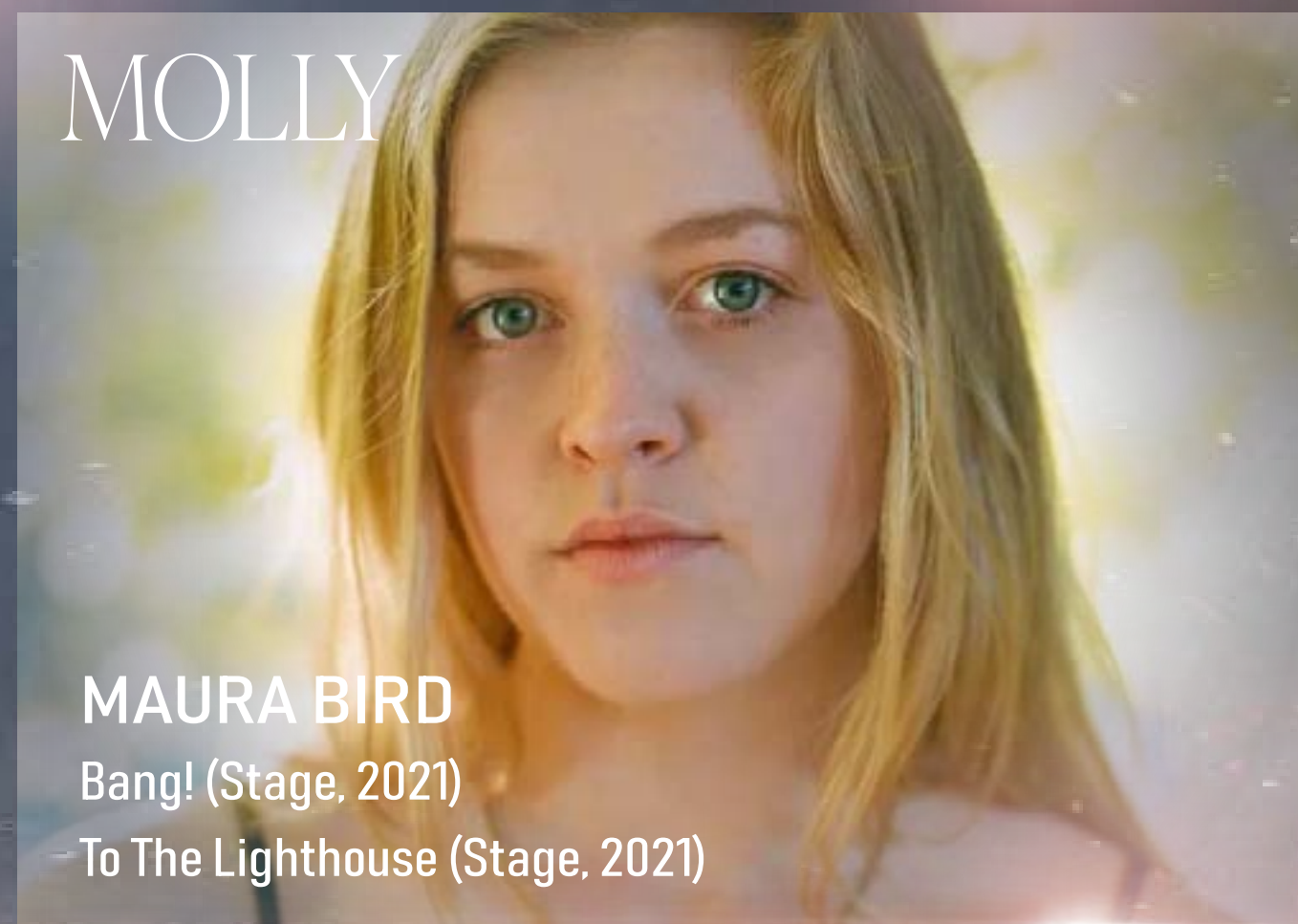


**INDEYARNA DONALDSON-HOLNESS**

Save Me (TV, 2018-2020)

Deep Water (TV, 2019)

MOLLY



**MAURA BIRD**

Bang! (Stage, 2021)

To The Lighthouse (Stage, 2021)

PENN



**ESMÉ KINGDOM**

eccho rights



# FALLEN

Silver Reel



## EPISODE ONE SWORD AND CROSS

Convicted for a crime she cannot remember committing, Lucinda (Luce) Price is sent to the unsettling and strange correctional facility of Sword and Cross. Having trouble adjusting, Luce meets the other residents, including the magnetic and brooding Daniel – who has the strange feeling that he has met Luce before – and the mercurial, wise-cracking Cam – who seems to know more about Luce’s destiny than he wants to admit. Unnerved by the enigmatic Doctor Howson and the authoritarian Miss Miriam, Luce tries to work out what is happening to her. When Daniel tries to escape, Luce and Cam follow him. But a shocking tragedy befalls Cam that soon makes Luce question her sanity...

## EPISODE TWO STOLEN TIME

Reeling from her punishment in solitary, Luce questions her memory of what happened to Cam. Did she hurt him? Unsure if she can still trust her own memory, she sets out to retrieve Cam’s medical records to find the truth. Daniel, broken from his own severe punishment, refuses to help in Luce’s plan to break into the medical bay. Meanwhile Cassie, the only person to ever escape the facility, is trying to find Daniel a new way out of Sword & Cross when a nightmarish creature ambushes her in her home. Back at Sword & Cross, Luce runs into trouble during her break-in at the medical center. Daniel steps in to ensure she isn’t caught. Luce manages to get the medical data out of the facility for decryption but is left with a single photograph from the files. It gives a glimpse of Daniel’s impossible past...

eccho rights



**EPISODE THREE****BUTTERFLY**

Luce suspects that Howson is controlling their memories and manages to steal photographs from his office that show her and other residents undergoing a medical procedure. While the residents are out on a hike, Howson is informed of the attack on Cassie and has her brought to Sword and Cross. At the lake, Daniel and Luce grow closer. But the light, romantic atmosphere takes a turn when something pulls Luce under the water. Luce and Daniel are taken to the medical bay where they find a restricted room and see Cassie dead on a slab...

**EPISODE FOUR****OUTCAST**

Howson organizes the capture of the creature that attacked Luce in the lake and interrogates it. It's an Outcast; a creature with a hive mind. Luce comforts Daniel over his grief for Cassie as they await the return of the decrypted medical files. While Luce tries to work out how to sneak away to collect them, Penn, who has lived at Sword & Cross since she was born, gets closer to the troubling truth about her own past. When her father turns up at the facility, looking for answers about his 'dead' daughter, the distraction allows Luce and Daniel to retrieve their files. But the answers will turn their world upside down...



**EPISODE FIVE****MARTINI**

Luce learns that Daniel has been in the facility for over twenty years – and yet he hasn't physically aged. It's the same story for the other residents. Deciding to get the information — and Daniel (as living proof) outside to the wider world — Luce organizes a breakout. But her escape is cut short when they realize that Howson has been tipped off and is waiting for them. As they try to work out who betrayed them, the Outcast escapes and injures Daniel. Desperate to save him, Luce tries to find medical supplies — but instead discovers a shocking secret. A dead body of another Lucinda Price.

**EPISODE SIX****SIX CHARACTERS IN SEARCH OF AN EXIT**

As the facility is compromised, Miss Miriam initiates a desperate hunt for the Outcast while Howson tries to save Daniel's life. Luce and the other residents try to make their way to safety, but the creature is pursuing them through the catacombs and corridors, leaving a trail of death in its wake. Trapped in a room, Luce discovers the identity of the person who betrayed them to Howson. But why did Cam do it? Meanwhile Daniel fades on the operating table as he remembers his time in the past with another version of Luce. As life slips away, can Luce reach him and save him?



**EPISODE SEVEN****THE STORM**

Miss Miriam reveals some of the secrets of Sword & Cross to the residents. As they reel from the revelations, Luce has her own issues. Daniel has rejected her, worried that she will die if she stays with him. Furthermore, she's seen a vision of Penn's death and struggles to work out what it means. She now believes that Howson is as in the dark as she is. When Luce and Daniel learn that Penn is planning to leave to find her father – whom she now believes to be alive – Luce talks her into staying. But Penn breaks her promise. As she leaves, someone is waiting for her with murderous intent...

**EPISODE EIGHT****INTO THE SHADOWS**

Mourning Penn's death, Luce is convinced she was murdered. The residents decide to finally work together to get answers. Daniel confronts Miss Miriam and Cam confronts Howson. Meanwhile, Luce tries to get answers from Miss Sophia, who traps her in the burning library. Daniel leaps to Luce's rescue and the pair are finally reconciled. Later, with Outcasts overrunning the facility, the residents realize that Luce faces a violent end that could affect the future of all humanity. As they race to save her, Luce must confront her fear to survive. She'll have to leave Daniel. What will she do?



FALLEN

Silver Reel



SHOWRUNNER  
**MATT HASTINGS**

Hastings is an Emmy-nominated Producer of  
THE HANDMAID'S TALE for HULU/MGM.

Directing highlights:  
CIRCUIT BREAKERS for APPLE TV  
SPINNING OUT for NETFLIX  
SHADOW HUNTERS for NETFLIX



eccho rights



## NIGHT TRAIN MEDIA - PRODUCER

Night Train Media (NTM) was founded by Herbert L. Kloiber, former managing director of Tele München Group in 2020. Based in Munich and London, NTM is active on a global scale. Collaborating with a vast network of international producers and distributors, NTM's core segments include development, licensing, co-production and co-financing of premium English and local language fictional and factual content.

NTM is backed by industrial private equity investor Serafin Group to enable future company growth. NTM is majority owner of London based factual distributor BossaNova Media, founded by Paul Heaney and Stockholm based scripted distributor Eccho Rights as well as majority owner of UK's leading factual production company Curve Media.

NTM and Eccho Rights have co-produced titles including The Inheritance and The Catch for Channel 5, The Ex-Wife for Paramount+, The Vanishing Triangle for Sundance Now and Virgin Media, and feature film Rogue Agent starring James Norton and Gemma Arterton.

More information: <http://www.nighttrainmedia.com/>



## CLAUDIA BLUEMHUBER – PRODUCER

In her years as a creator of feature films and series Claudia has produced and executive produced among others the Oscar nominated feature film and Golden Globe winner THE WIFE as well as Oscar nominated animation feature LOVING VINCENT. She also served as an Executive Producer on the drama series THE LUMINARIES which scored the 2nd-highest launch for a BBC One drama in Summer 2020 and won 8 NZ TV Awards. One of the first shows Claudia developed was the Emmy nominated MOST DANGEROUS GAME. Initially a Silver Reel feature, Claudia brought Nick Santora on to develop the story into a short-form format which premiered at Quibi's launch; and has picked up two Emmy nominations. The show was recently renewed for season two at ROKU. As Executive Producer, showrunner, writer and director Claudia has multiple series in development including a multi-season TV series with HBO and STX Entertainment and a TV series with the BBC. Beyond her TV work, Claudia is one of the industry's most prolific female producers with over 40 international independent films over the course of 12 years. PARADISE HIGHWAY starring Juliette Binoche and Morgan Freeman was shot last summer and is set to be released in 2022. Films such as THE WIFE, LOVING VINCENT, THE RAILWAY MAN, UNDER THE SKIN and EYE IN THE SKY are part of her producing portfolio. Since 2009, Claudia is the CEO of Silver Reel.



Silver Reel



DURATION

8 x 50'

PRODUCED BY

Silver Reel, Night Train Media

SHOWRUNNER

Matt Hastings

WRITTEN BY

Roland Moore and Rachel Patterson

CONTACT

Lucy Roberts, Eccho Rights: [lucy@ecchorights.com](mailto:lucy@ecchorights.com)

Pippa Lambert, Hellcat: [plambert@hellcatcrop.com](mailto:plambert@hellcatcrop.com)

eccho rights